

APPENDIX F: FLORIDA MASTER SITE FILE REPORT



Total=12

Manuscript Roster

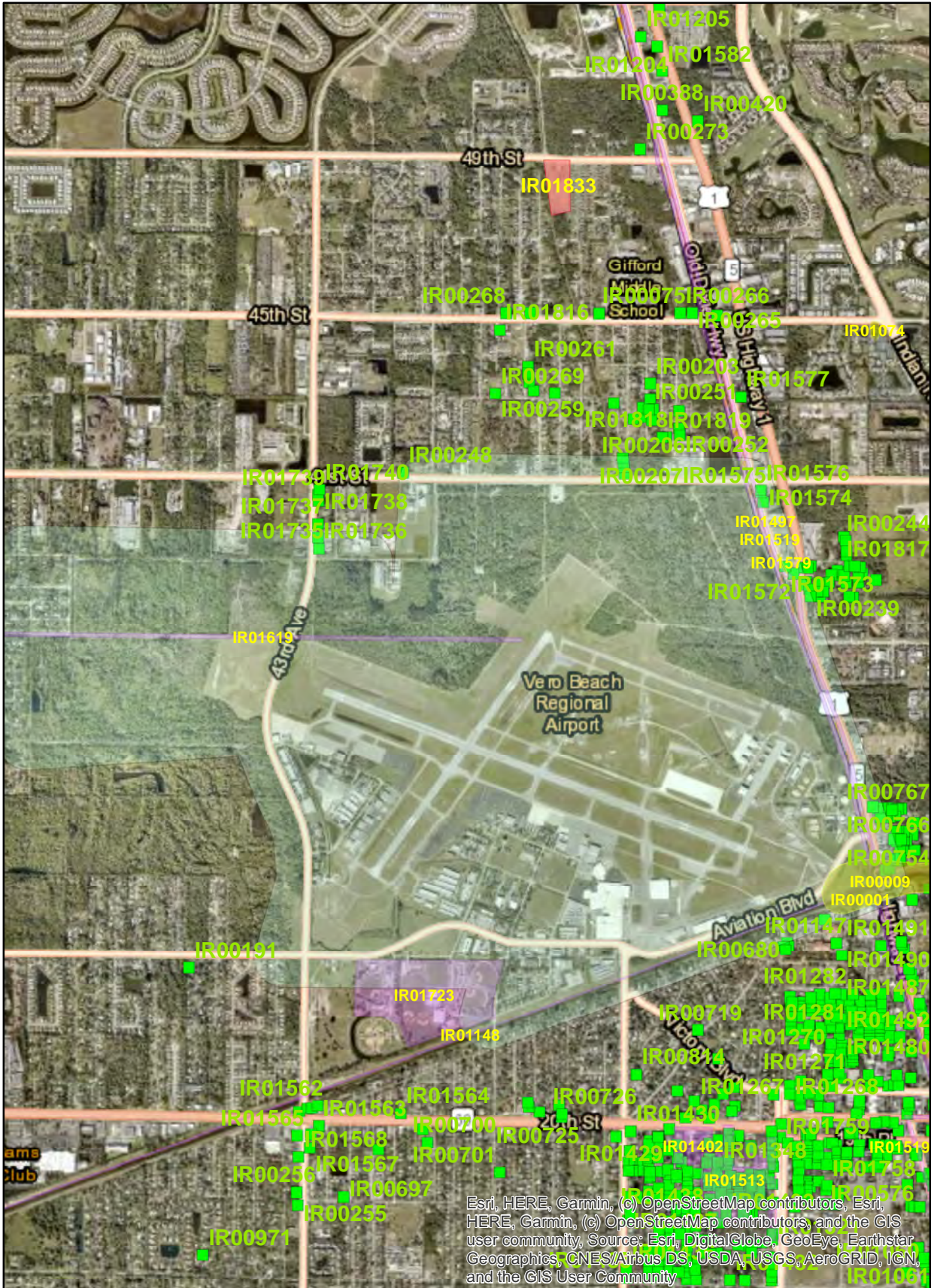
MS#	Title	Publication Information	Year
22439	A Cultural Resource Assessment Survey of the Proposed 43rd Avenue Sidewalk Improvements from 26th Street to Airport Drive West Indian River County, Florida	2015, Wallace, Jelane. A Cultural Resource Assessment Survey of the Proposed 43rd Avenue Sidewalk Improvements from 26th Street to Airport Drive West Indian River County, Florida. Panamerican Consultants, Inc., Lakeland, Florida	2015
25910	A Cultural Resource Assessment Survey of the Proposed 43rd Avenue Sidewalk Improvements from Airport Drive West to 41st Street Indian River County, Florida	PanAmerican Consultants, Inc., prepared for G.K. Environmental, Inc.	2015
20946	A Cultural Resource Assessment Survey of the Proposed Old Dixie Highway Sidewalk Project Between 45th Street and 38th Lane in Vero Beach, Indian River County, Florida	2013, Wallace, Jelane, and Stacey Griffin. A Cultural Resource Assessment Survey of the Proposed Old Dixie Highway Sidewalk Project Between 45th Street and 38th Lane, In Indian River County, Florida, Panamerican Consultants, Inc., Lakeland, Florida	2013
20495	Cultural Resource Assessment Report for the All Aboard Florida Passenger Rail Project from Orlando to West Palm Beach	Janus Research, 1107 N. Ward Street, Tampa FL 33607	2013
18447	Cultural Resource Assessment Survey of State Road 5/US-1 from 37th Place to 45th Street, Indian River County, Florida	Janus Research, prepared for the Florida Department of Transportation, District 4	2011
14147	A Preliminary Archaeological Survey of the Main Canal Vortex Treatment System/Vero Site, Vero Beach, Florida	Thomas Penders & Associates, Titusville. Prepared for Public Works Department Stormwater Engineering Division, Government of Indian River County, Vero Beach	2005
14150	An Archeological and Historical Survey of the Proposed Indian River County Administration Complex, Vero Beach, Florida	Thomas Penders & Associates, Titusville. Prepared for Government of Indian River County, Vero Beach	2005
7312	An Archaeological and Historical Survey of the Act Vero Airport Tower Location in Indian River County, Florida	PANAMERICAN CONSULTANTS, INC., TAMPA. Submitted TO EPAC ENVIRONMENTAL SCIENCES, INC., POMPANO BEACH	2002
7420	An Archaeological and Historical Survey of the Proposed Vero Airport Tower Location in Indian River County, Florida	PANAMERICAN CONSULTANTS, INC., TAMPA. Submitted TO G.K. ENVIRONMENTAL, INC., VERO BEACH	2002
7396	An Archaeological and Historical Survey of the Proposed Dodger Town Tower Location in Indian River County, Florida	PANAMERICAN CONSULTANTS, INC., TAMPA. Submitted TO EPAC ENVIRONMENTAL SERVICES, INC., POMPANO BEACH	2001
2580	Historical resource assessment survey of the proposed bridge replacement on 27th Avenue over the Main Canal in Vero Beach, Florida	Florida Department of Transportation, Tallahassee.	1990
2670	Historic Properties Survey of the City of Vero Beach, Florida	Report submitted to the City of Vero Beach, FL, by Historical Property Associates, Inc., St. Augustine.	1990



AR=3
 SS=32
 CM=0
 RG=5
 BR=0
 Total=40

Cultural Resource Roster

SiteID	Type	Site Name	Address	Additional Info	SHPO Eval	NR Status
IR00001	AR	VERO MAN	Fellsmere	Human Remains May Be Present	Eligible	
IR00009	AR	VERO LOCALITY	Vero Beach	Human Remains May Be Present	Eligible	
IR00204	SS	4115 28TH AVE	4115 28TH AVE, GIFFORD	c1930 Frame Vernacular		
IR00205	SS	4127 28TH AVE	4127 28TH AVE, GIFFORD	c1930 Frame Vernacular		
IR00206	SS	4133 28TH AVE	4133 28TH AVE, GIFFORD	c1925 Frame Vernacular		
IR00207	SS	4135 28TH AVE	4135 28TH AVE, GIFFORD	c1925 Frame Vernacular		
IR00232	SS	1915 38TH LN	1915 38TH LN, GIFFORD	c1925 Frame Vernacular		
IR00233	SS	1925 38TH LN	1925 38TH LN, GIFFORD	c1925 Bungalow		
IR00238	SS	1910 38TH PL	1910 38TH PL, GIFFORD	c1925 Bungalow		
IR00239	SS	1911 38TH PL	1911 38TH PL, GIFFORD	c1925 Bungalow		
IR00248	SS	3890 41ST ST	3890 41ST ST, GIFFORD	c1925 Bungalow		
IR00732	SS	MARVIN GARDENS LUNCH	3030 US 1, A, VERO BEACH	1926 Frame Vernacular		
IR00733	SS	MARVIN GARDENS OFFICE	3030 US 1, B, VERO BEACH	c1925 Frame Vernacular		
IR00738	SS	1316 31ST STREET #6	1316/#6 31ST STREET, VERO BEACH	c1935 Frame Vernacular		
IR00739	SS	1316 31ST STREET #7	1316/#7 31ST STREET, VERO BEACH	c1935 Frame Vernacular		
IR00740	SS	1316 31ST STREET #8	1316/#8 31ST STREET, VERO BEACH	c1935 Frame Vernacular		
IR00741	SS	1316 31ST STREET #9	1316/#9 31ST STREET, VERO BEACH	c1935 Frame Vernacular		
IR00742	SS	1316 31ST STREET #10	1316/#10 31ST STREET, VERO BEACH	c1935 Frame Vernacular		
IR00743	SS	1316 31ST STREET #11	1316/#11 31ST STREET, VERO BEACH	c1935 Frame Vernacular		
IR00753	SS	1345 32ND STREET	1345 32ND STREET, VERO BEACH	c1935 Frame Vernacular		
IR00761	SS	1355 33RD STREET	1355 33RD STREET, VERO BEACH	c1925 Frame Vernacular		
IR00762	SS	1365 33RD STREET	1365 33RD STREET, VERO BEACH	c1935 Frame Vernacular		
IR00763	SS	1366 33RD STREET	1366 33RD STREET, VERO BEACH	c1935 Frame Vernacular		
IR00764	SS	1376 33RD STREET	1376 33RD STREET, VERO BEACH	c1935 Frame Vernacular		
IR00765	SS	1375 33RD STREET	1375 33RD STREET, VERO BEACH	c1925 Frame Vernacular		
IR00766	SS	1394 33RD STREET	1394 33RD STREET, VERO BEACH	c1935 Masonry Vernacular		
IR01146	SS	Mt. Zion Baptist Church	18th AVE, Vero Beach	c1923 Other	Not Eligible	
IR01148	RG	Indian River Farms Main Canal	Vero Beach	Linear Resource - 1 Contrib Resources	Not Eligible	
IR01497	RG	Florida East Coast Railroad	Vero Beach	Linear Resource - 1 Contrib Resources		
IR01519	RG	Dixie Highway	Sebastian	Linear Resource - 1 Contrib Resources	Eligible	
IR01572	SS	3882 Old Dixie Highway	3882 Old Dixie HWY, Vero Beach	1950- Masonry Vernacular	Not Eligible	
IR01573	SS	3880 Old Dixie Highway	3880 Old Dixie HWY, Vero Beach	1950- Masonry Vernacular	Not Eligible	
IR01574	SS	Kool Kuts	4036 Old Dixie HWY, Vero Beach	1964- Commercial	Not Eligible	
IR01575	SS	Gold Fried Rice & Player's Club Pool Hall	4050-4066 Old Dixie HWY, Vero Beach	1948- Masonry Vernacular	Not Eligible	
IR01576	SS	New Club Bali	4076 Old Dixie HWY, Vero Beach	1948- Masonry Vernacular	Not Eligible	
IR01579	AR	Gifford Glass Scatter	Gifford		Insufficient Info	
IR01619	RG	Indian River Farms Company Canal-37th St	Vero Beach	Linear Resource - 1 Contrib Resources	Not Eligible	
IR01723	RG	Dodgertown	Vero Beach	FMSF Building Complex		
IR01735	SS	4004 43rd Avenue	4004 43rd AVE, Vero Beach	1957- Masonry Vernacular		
IR01736	SS	4024 43rd Avenue	4024 43rd AVE, Vero Beach	1956- Masonry Vernacular		



Esri, HERE, Garmin, (c) OpenStreetMap contributors, Esri, HERE, Garmin, (c) OpenStreetMap contributors, and the GIS user community, Source: Esri, DigitalGlobe, GeoEye, Earthstar Geographics, CNES/Airbus DS, USDA, USGS, AeroGRID, IGN, and the GIS User Community

- Legend**
- Buffer_of_Default_Annotation_Target_45
 - FloridaSites
 - HistoricalBridges
 - HistoricalCemeteries
 - ResourceGroups
 - FloridaStructures

