

**APPENDIX K: VERTIPORT LAYOUT PLAN DRAWINGS SET**



**REFERENCES:**

- LATITUDE AND LONGITUDE ARE BASED ON NORTH AMERICAN DATUM OF 1983 (NAD83) FLORIDA STATE PLANE, EAST ZONE.
- VERTICAL CONTROL IS REFERENCED TO THE NORTH AMERICAN VERTICAL DATUM OF 1988 (NAVD88).
- ELEVATIONS SHOWN ARE IN 'MEAN SEA LEVEL' (MSL) UNLESS NOTED OTHERWISE AND ARE NOT INTENDED FOR DESIGN PURPOSES.
- ALL DIMENSIONS ARE IN US FEET UNLESS NOTED OTHERWISE.

**GENERAL NOTES:**

- VRB AIRPORT LAYOUT PLAN SET WAS DEVELOPED AS A SEPARATE DOCUMENT.

VERTIPOINT DATA TABLE	
ITEM	FUTURE
AIRPORT IDENTIFIER	VRB
REFERENCE VTOL AIRCRAFT MTOW	12,500 POUNDS OR LESS SMALL AIRCRAFT
MEAN MAX. TEMPERATURE HOTTEST MONTH	88° F AUGUST
VERTIPOINT ELEVATION (MSL)	23.0'
AIRPORT NAVIGATIONAL AIDS	N/A
VERTIPOINT REFERENCE POINT	LATITUDE N27° 38' 53.27" LONGITUDE W80° 25' 04.96"
CRITICAL DESIGN AIRCRAFT	12,500 POUNDS OR LESS SMALL AIRCRAFT
MAGNETIC VARIATION	7.28° W ± 0.34°, CHANGING 0.08° W PER YEAR

TAXIWAY DATA TABLE - FUTURE		
FUTURE TAXIWAY	TAXIWAY WIDTH	TAXIWAY LIGHTING
TAXIWAY A	20'	MITL
TAXIWAY B	20'	MITL
TAXIWAY C	20'	MITL

VERTIPOINT DATA TABLE		
ITEM	SOUTH (ROUTE 1)	WEST (ROUTE 2)
	FUTURE	FUTURE
REFERENCE VTOL AIRCRAFT	12,500 POUNDS OR LESS (SMALL AIRCRAFT)	
CONTROLLING DIMENSION	50'	
PAVEMENT SURFACE TYPE	CONCRETE <sup>1</sup>	
PAVEMENT STRENGTH (WHEEL LOADING)	12,500 POUNDS	
SURFACE TREATMENT	NON-GROOVED	
VERTIPOINT COORDINATES (NAD 83)	LATITUDE N27° 38' 53.27"	LONGITUDE W80° 25' 04.96"
VERTIPOINT SITE GROUND ELEVATION (MSL)	21.0'	
VERTIPOINT PAD ELEVATION (MSL)	23.0'	
VERTIPOINT CROSSING HEIGHT	10 FEET (PROCEDURE TO BE DEVELOPED)	
SAFETY AREA DIMENSIONS	125' DIAMETER	
TOUCHDOWN AND LIFTOFF AREA (TLOF) DIMENSIONS	50' DIAMETER	
FINAL APPROACH AND TAKEOFF AREA (FATO) DIMENSIONS	100' DIAMETER	
VERTIPOINT LIGHTING TYPE	TLOF/FATO PERIMETER LIGHTING	
VERTIPOINT MARKING TYPE	STANDARD	
APPROACH AND DEPARTURE SURFACE SLOPE	8:1 SLOPE	8:1 SLOPE
PRIMARY INGRESS/EGRESS	S14° 02' 08"E	N/A
SECONDARY INGRESS/EGRESS	N/A	N70° 39' 07"W
APPROACH AND DEPARTURE SURFACE DIMENSIONS	95' / 500' / 4,000'	95' / 500' / 4,000'
VISIBILITY MINIMUMS	VISUAL	
VISUAL AND INSTRUMENT NAVAIDS	NONE	

**NOTES:**

- FINAL PAVEMENT SURFACE TYPE TO BE DETERMINED DURING DESIGN.

**SOURCES:**

- MAGNETIC DECLINATION: NATIONAL OCEANIC AND ATMOSPHERIC ADMINISTRATION (NOAA) NATIONAL GEOPHYSICAL DATA CENTER, DATED FEBRUARY 2024.
- VERTIPOINT REFERENCE POINT: CALCULATED USING CENTER OF VERTIPOINT TOUCHDOWN AND LIFTOFF AREA (TLOF).
- BASE MAPPING: NV5 GEOSPATIAL, DATED MAY 2023.
- AERIAL PHOTOGRAPHY: NV5 GEOSPATIAL, DATED MAY 2023.
- MAPPING REFERENCES: LATITUDE AND LONGITUDE ARE BASED ON THE FLORIDA STATE PLANE COORDINATE SYSTEM EAST ZONE NAD 1983. VERTICAL CONTROL REFERENCED TO NAVD 1988.

**REFERENCES:**

- VERTIPOINT PREPARED USING DESIGN CRITERIA FROM FAA ENGINEERING BRIEF No. 105A "VERTIPOINT DESIGN" LATEST UPDATE DECEMBER 27, 2024.

VERO BEACH  
REGIONAL AIRPORT  
(VRB)

VERTIPOINT LAYOUT PLAN  
DRAWINGS SET

DATE	REVISION DESCRIPTION	BY

ISSUE: JUNE 2024

PROJECT NO: 20A0069W01

CAD FILE: 39\_DATA\_VERTIPOINT.DWG

DESIGN BY: JA

DRAWN BY: JA

REVIEWED BY: SZ

SHEET TITLE

VERTIPOINT  
DATA SHEET

VERO BEACH  
REGIONAL AIRPORT  
(VRB)

AIRPORT LAYOUT PLAN  
DRAWINGS SET

DATE	REVISION DESCRIPTION	BY

ISSUE: AUGUST 2024

PROJECT NO: 20A0069W01

CAD FILE: 40\_FUT\_VLP.DWG

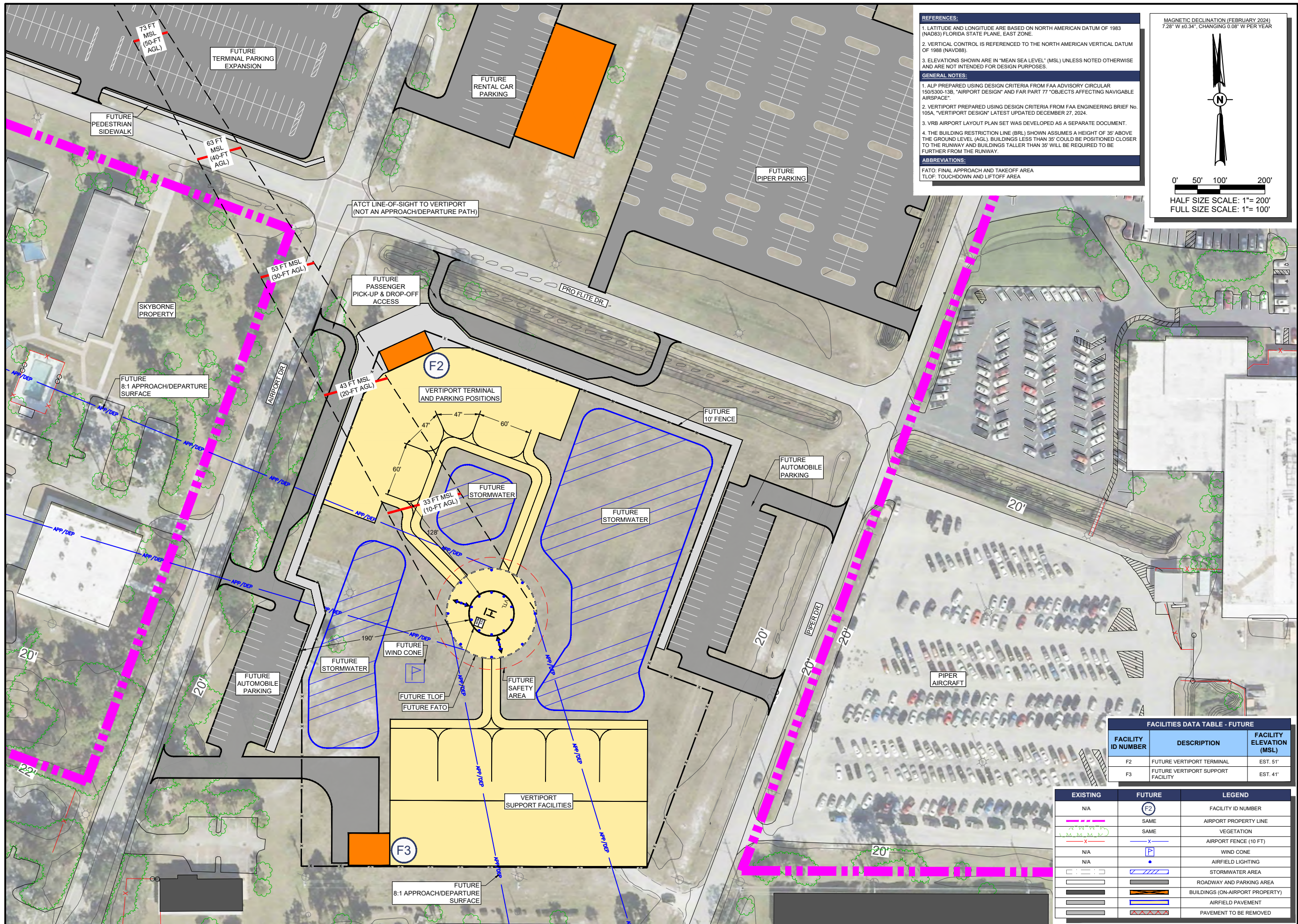
DESIGN BY: JA

DRAWN BY: JA

REVIEWED BY: SZ

SHEET TITLE

FUTURE  
VERTIPORT  
LAYOUT PLAN



**REFERENCES:**

1. LATITUDE AND LONGITUDE ARE BASED ON NORTH AMERICAN DATUM OF 1983 (NAD83) FLORIDA STATE PLANE, EAST ZONE.
2. VERTICAL CONTROL IS REFERENCED TO THE NORTH AMERICAN VERTICAL DATUM OF 1988 (NAVD88).
3. ELEVATIONS SHOWN ARE IN "MEAN SEA LEVEL" (MSL) UNLESS NOTED OTHERWISE AND ARE NOT INTENDED FOR DESIGN PURPOSES.

**GENERAL NOTES:**

1. ALP PREPARED USING DESIGN CRITERIA FROM FAA ADVISORY CIRCULAR 150/5300-13B, "AIRPORT DESIGN" AND FAR PART 77 "OBJECTS AFFECTING NAVIGABLE AIRSPACE".
2. VERTIPORT PREPARED USING DESIGN CRITERIA FROM FAA ENGINEERING BRIEF NO. 105A, "VERTIPORT DESIGN" LATEST UPDATED DECEMBER 27, 2024.
3. VRB AIRPORT LAYOUT PLAN SET WAS DEVELOPED AS A SEPARATE DOCUMENT.
4. THE BUILDING RESTRICTION LINE (BRL) SHOWN ASSUMES A HEIGHT OF 35' ABOVE THE GROUND LEVEL (AGL). BUILDINGS LESS THAN 35' COULD BE POSITIONED CLOSER TO THE RUNWAY AND BUILDINGS TALLER THAN 35' WILL BE REQUIRED TO BE FURTHER FROM THE RUNWAY.

**ABBREVIATIONS:**

FATO: FINAL APPROACH AND TAKEOFF AREA  
TLOF: TOUCHDOWN AND LIFTOFF AREA

MAGNETIC DECLINATION (FEBRUARY 2024)  
728° W ±0.34", CHANGING 0.08" W PER YEAR

0' 50' 100' 200'

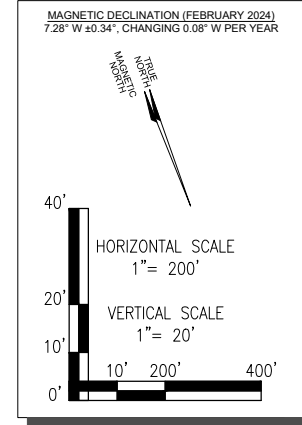
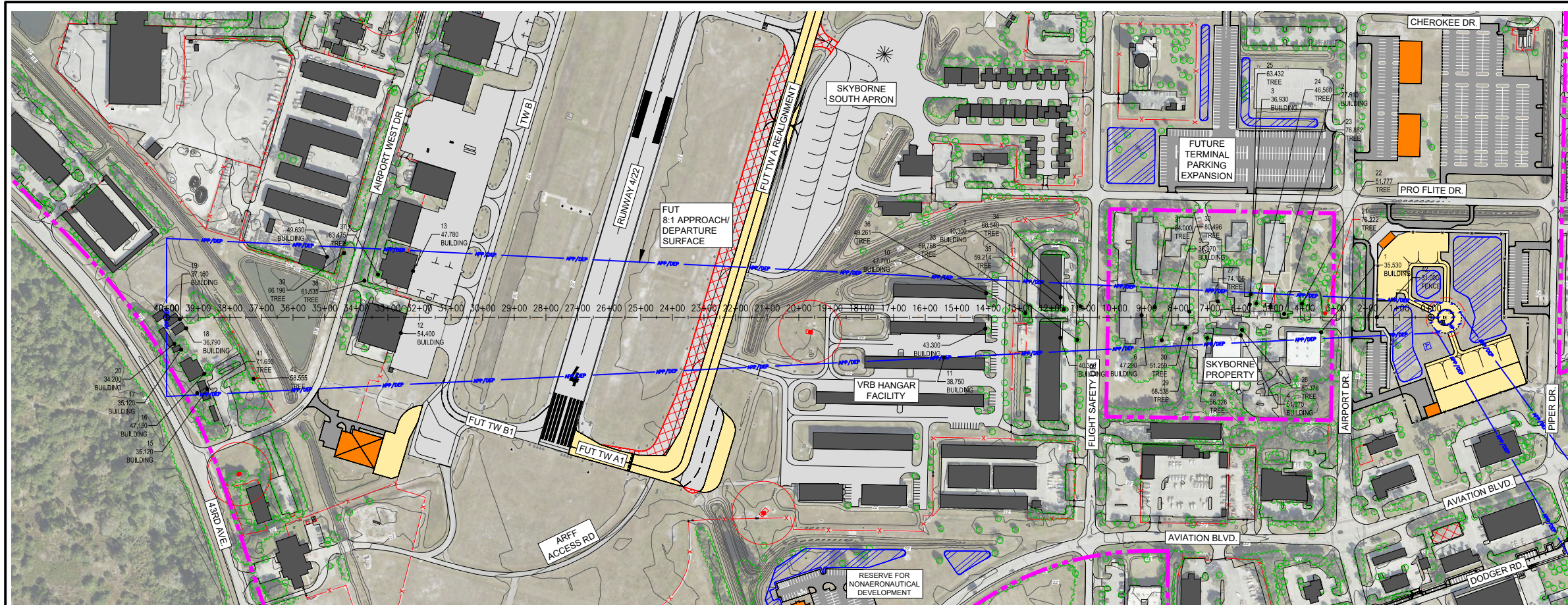
HALF SIZE SCALE: 1"= 200'  
FULL SIZE SCALE: 1"= 100'

FACILITIES DATA TABLE - FUTURE

FACILITY ID NUMBER	DESCRIPTION	FACILITY ELEVATION (MSL)
F2	FUTURE VERTIPORT TERMINAL	EST. 51'
F3	FUTURE VERTIPORT SUPPORT FACILITY	EST. 41'

EXISTING	FUTURE	LEGEND
N/A	F2	FACILITY ID NUMBER
---	---	AIRPORT PROPERTY LINE
---	---	VEGETATION
---	---	AIRPORT FENCE (10 FT)
N/A	P	WIND CONE
N/A	•	AIRFIELD LIGHTING
---	---	STORMWATER AREA
---	---	ROADWAY AND PARKING AREA
---	---	BUILDINGS (ON-AIRPORT PROPERTY)
---	---	AIRFIELD PAVEMENT
---	---	PAVEMENT TO BE REMOVED

APR 28, 2025 4:11 PM ALEXA02178  
I:\2020\20A0069W01\CAD\AIRPORT\SHHEET\VP-40\_FUT\_VLP.DWG



**HANSON**  
Engineering | Planning | Allied Services

Hanson Professional Services Inc.  
6230 University Parkway, Suite 202  
Sarasota, FL 34240  
Phone: (941) 342-6321

Offices Nationwide  
www.hanson-inc.com

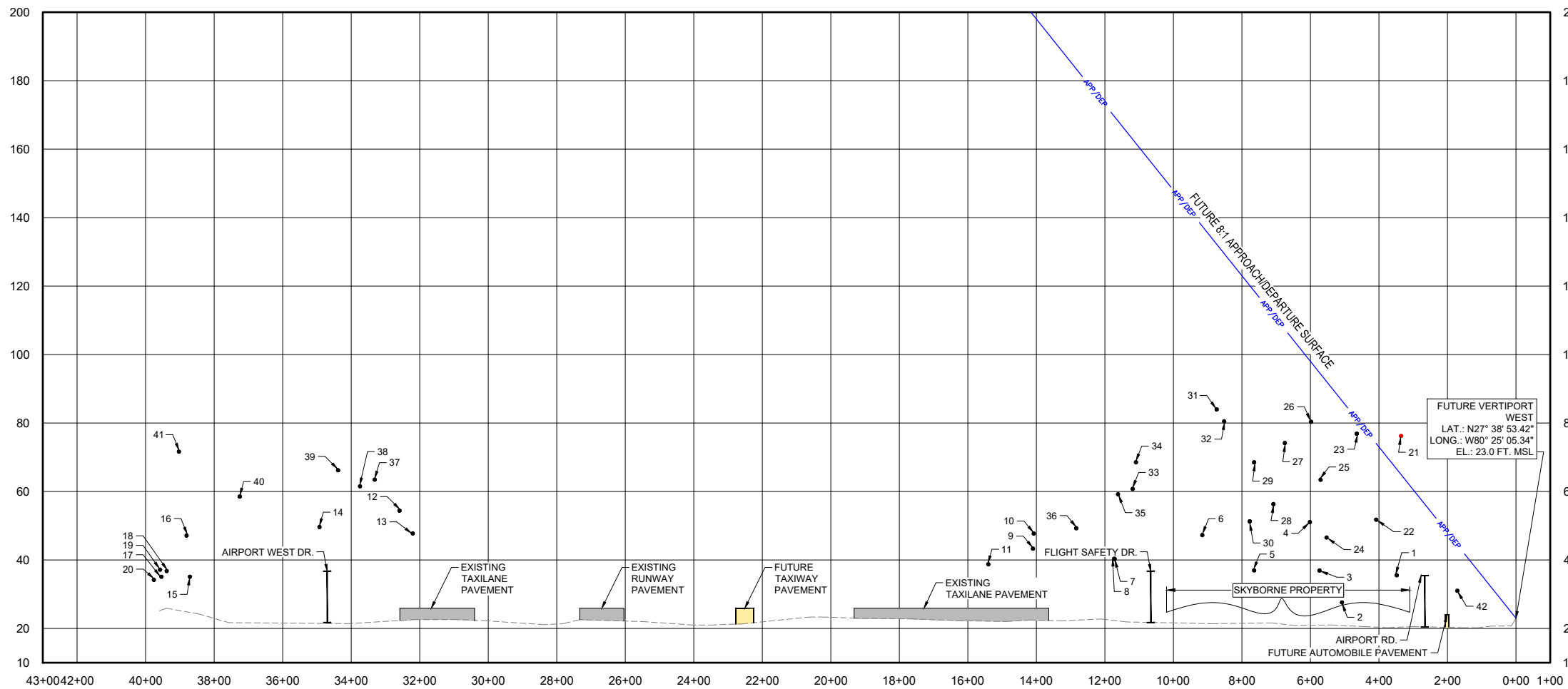
**VERO BEACH**  
REGIONAL AIRPORT

VERO BEACH REGIONAL AIRPORT  
3400 CHEROKEE DRIVE  
VERO BEACH, FL 32960  
PHONE (772) 978-4930

NOTE: OBJECTS SHOWN IN PLAN AND PROFILE VIEWS ARE WITHIN APPROACH/DEPARTURE SURFACE.

● OBJECTS WITHIN APPROACH/DEPARTURE SURFACE

**FUTURE VERTIPORT (WEST) - PLAN**  
**FUTURE VERTIPORT (WEST) - PROFILE**



**REFERENCES:**

- LATITUDE AND LONGITUDE ARE BASED ON NORTH AMERICAN DATUM OF 1983 (NAD83) FLORIDA STATE PLANE, EAST ZONE.
- VERTICAL CONTROL IS REFERENCED TO THE NORTH AMERICAN VERTICAL DATUM OF 1988 (NAVD88).
- ELEVATIONS SHOWN ARE IN "MEAN SEA LEVEL" (MSL) UNLESS NOTED OTHERWISE AND ARE NOT INTENDED FOR DESIGN PURPOSES.

**GENERAL NOTES:**

- ALP PREPARED USING DESIGN CRITERIA FROM FAA ADVISORY CIRCULAR 150/5300-13B, "AIRPORT DESIGN" AND FAR PART 77 "OBJECTS AFFECTING NAVIGABLE AIRSPACE".
- VERTIPORT PREPARED USING DESIGN CRITERIA FROM FAA ENGINEERING BRIEF No. 105A, "VERTIPORT DESIGN" LATEST UPDATED DECEMBER 27, 2024.
- VRB AIRPORT LAYOUT PLAN SET WAS DEVELOPED AS A SEPARATE DOCUMENT.

**OBSTRUCTION NOTES:**

- OBSTRUCTION SURVEY INFORMATION COLLECTED BY NV5 GEOSPATIAL IN MAY 2023.
- PER FAR PART 77, "OBJECTS AFFECTING NAVIGABLE AIRSPACE", RAILWAYS CONSIDERED AS 2' OBJECTS, INTERSTATE HIGHWAYS AS 17', PUBLIC ROADS AS 15', PRIVATE ROADS AS 10', OR THE HIGHEST OBJECT USING THE ROAD.
- TREES SHOWN AS OBJECTS MAY REPRESENT MULTIPLE TREES.
- SEE OBSTRUCTION DATA TABLE SHEET VP6.

EXISTING	FUTURE	LEGEND
		AIRPORT PROPERTY LINE
		VEGETATION
		AIRPORT FENCE (10 FT)
		STORMWATER AREA
		ROADS
		BUILDINGS (ON-AIRPORT PROPERTY)
		AIRFIELD PAVEMENT
		PAVEMENT TO BE REMOVED
NA		VERTIPORT APPROACH/DEPARTURE SURFACE

VERO BEACH REGIONAL AIRPORT (VRB)  
AIRPORT LAYOUT PLAN DRAWINGS SET

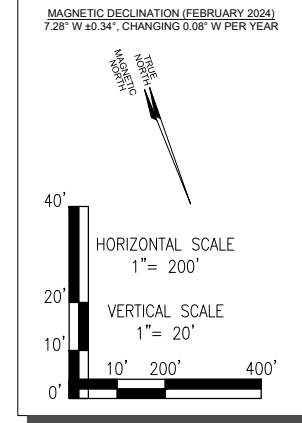
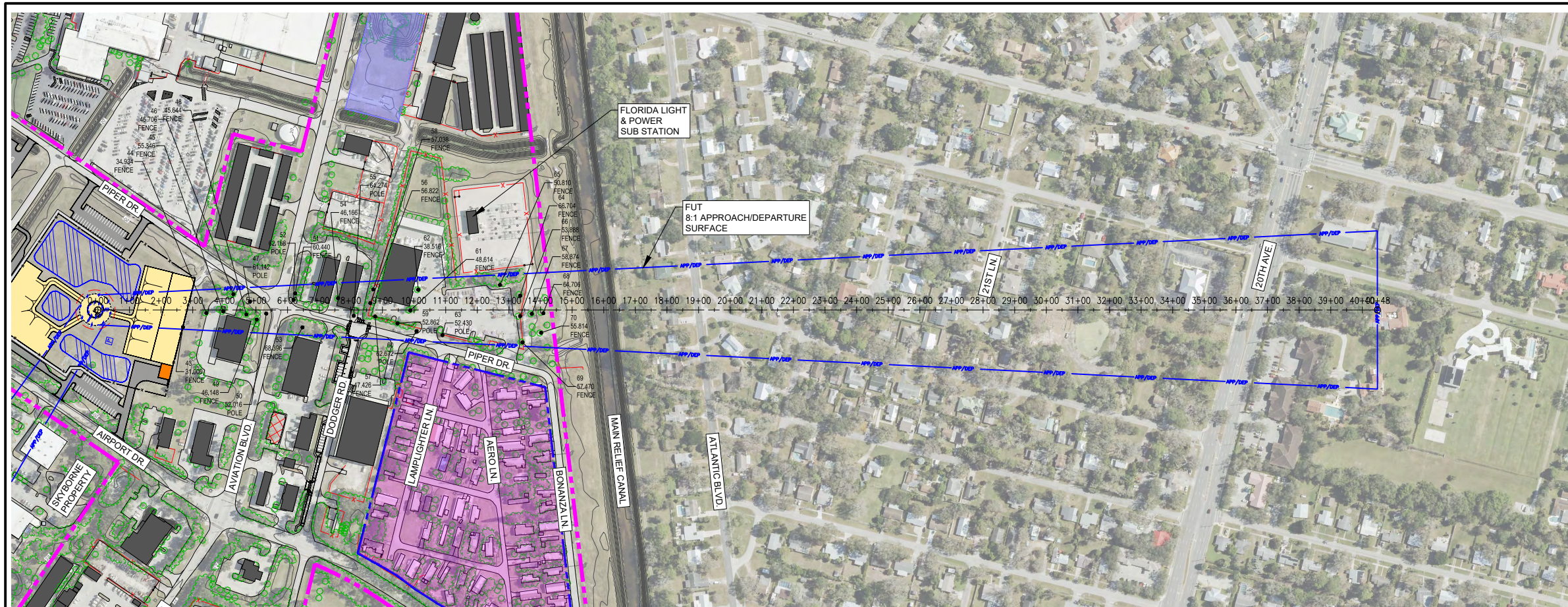
DATE	REVISION DESCRIPTION	BY

ISSUE: AUGUST 2024  
PROJECT NO: 20A0069W01  
CAD FILE: 41\_IPASD\_VERTIPORT W\_F.DWG  
DESIGN BY: JA  
DRAWN BY: JA  
REVIEWED BY: SZ

SHEET TITLE

IPASD - APPROACH AND DEPARTURE SURFACE - WEST

APR 28, 2025 4:12 PM ALEXA02178 1:20:08S\20A0069W01\CAD\AIRPORT\SHSHEET\VP41\_IPASD\_VERTIPORT W\_F.DWG



**HANSON**  
Engineering | Planning | Allied Services

Hanson Professional Services Inc.  
6230 University Parkway, Suite 202  
Sarasota, FL 34240  
Phone: (941) 342-6321

Offices Nationwide  
www.hanson-inc.com

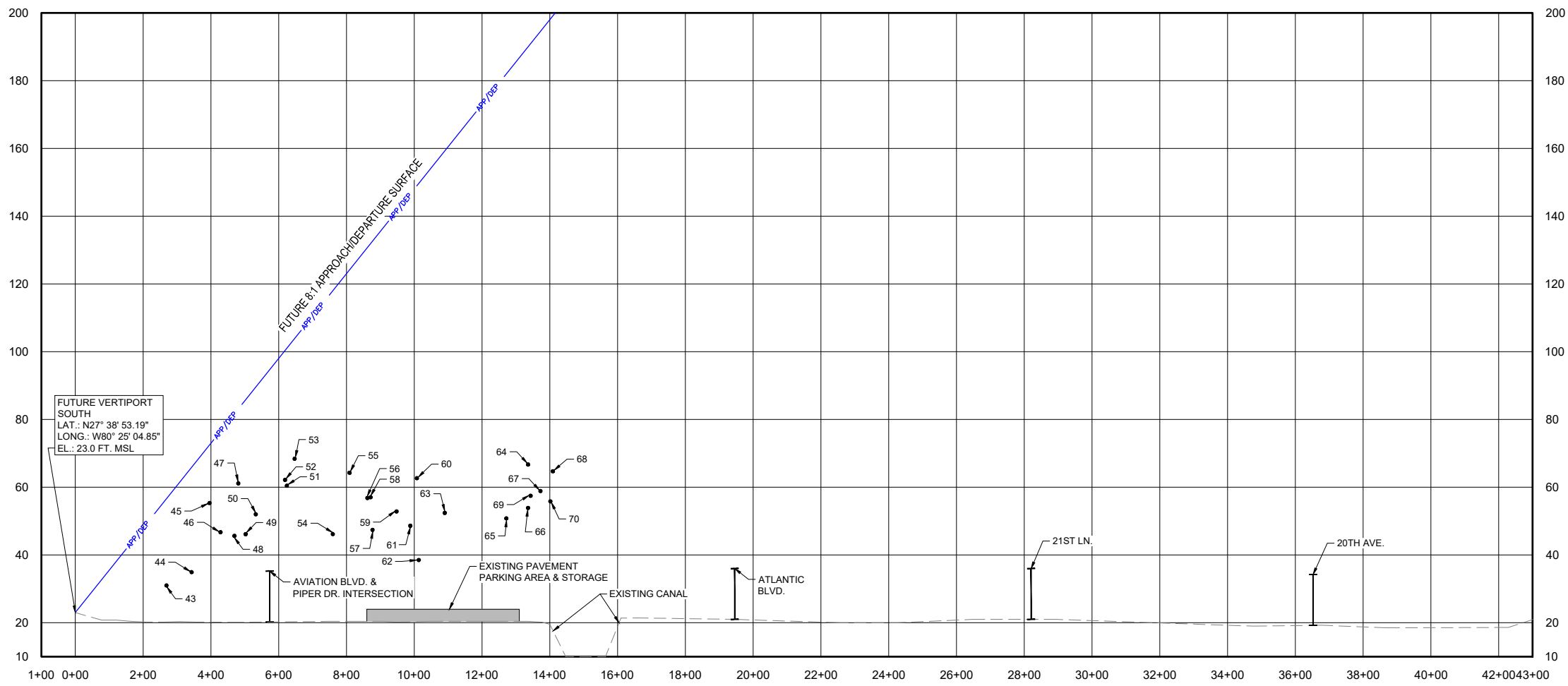
**VERO BEACH**  
REGIONAL AIRPORT

VERO BEACH REGIONAL AIRPORT  
3400 CHEROKEE DRIVE  
VERO BEACH, FL 32960  
PHONE (772) 978-4930

**FUTURE VERTIPORT (SOUTH) - PLAN**  
**FUTURE VERTIPORT (SOUTH) - PROFILE**

NOTE: OBJECTS SHOWN IN PLAN AND PROFILE VIEWS ARE WITHIN APPROACH/DEPARTURE SURFACE.

● OBJECTS WITHIN APPROACH/DEPARTURE SURFACE



**REFERENCES:**

- LATITUDE AND LONGITUDE ARE BASED ON NORTH AMERICAN DATUM OF 1983 (NAD83) FLORIDA STATE PLANE, EAST ZONE.
- VERTICAL CONTROL IS REFERENCED TO THE NORTH AMERICAN VERTICAL DATUM OF 1988 (NAVD88).
- ELEVATIONS SHOWN ARE IN "MEAN SEA LEVEL" (MSL) UNLESS NOTED OTHERWISE AND ARE NOT INTENDED FOR DESIGN PURPOSES.

**GENERAL NOTES:**

- ALP PREPARED USING DESIGN CRITERIA FROM FAA ADVISORY CIRCULAR 150/5300-13B, "AIRPORT DESIGN" AND FAR PART 77 "OBJECTS AFFECTING NAVIGABLE AIRSPACE".
- VERTIPORT PREPARED USING DESIGN CRITERIA FROM FAA ENGINEERING BRIEF No. 105A, "VERTIPORT DESIGN" LATEST UPDATED DECEMBER 27, 2024.
- VRB AIRPORT LAYOUT PLAN SET WAS DEVELOPED AS A SEPARATE DOCUMENT.

**OBSTRUCTION NOTES:**

- OBSTRUCTION SURVEY INFORMATION COLLECTED BY NV5 GEOSPATIAL IN MAY 2023.
- PER FAR PART 77, "OBJECTS AFFECTING NAVIGABLE AIRSPACE", RAILWAYS CONSIDERED AS 23' OBJECTS, INTERSTATE HIGHWAYS AS 17', PUBLIC ROADS AS 15', PRIVATE ROADS AS 10', OR THE HIGHEST OBJECT USING THE ROAD.
- TREES SHOWN AS OBJECTS MAY REPRESENT MULTIPLE TREES.
- SEE OBSTRUCTION DATA TABLE SHEET VP6.

EXISTING	FUTURE	LEGEND
		AIRPORT PROPERTY LINE
		VEGETATION
		AIRPORT FENCE (10 FT)
		STORMWATER AREA
		ROADS
		BUILDINGS (ON-AIRPORT PROPERTY)
		AIRFIELD PAVEMENT
		PAVEMENT TO BE REMOVED
NA		VERTIPORT APPROACH/DEPARTURE SURFACE

VERO BEACH REGIONAL AIRPORT (VRB)  
AIRPORT LAYOUT PLAN DRAWINGS SET

DATE	REVISION DESCRIPTION	BY

ISSUE: AUGUST 2024  
PROJECT NO: 20A0069W01  
CAD FILE: 42\_IPASD\_VERTIPORT S\_F.DWG  
DESIGN BY: JA  
DRAWN BY: JA  
REVIEWED BY: SZ

SHEET TITLE

IPASD - APPROACH AND DEPARTURE SURFACE - SOUTH

APR 28, 2025 4:13 PM ALEXA02178 1:20:08S\20A0069W01\CAD\AIRPORT\SHEET\42\_IPASD\_VERTIPORT S\_F.DWG

VERTIPOINT (WEST) OBSTRUCTION DATA TABLE					
OBJECT DATA			FUTURE E-1 APPROACH/DEPARTURE SURFACE		PROPOSED DISPOSITION
OBJECT NUMBER	OBJECT DESCRIPTION	OBJECT ELEVATION (MSL)	SURFACE ELEVATION (MSL)	SURFACE CLEARANCE (-) OR PENETRATION (+)	
1	BUILDING	36	67	-31	NO ACTION
2	BUILDING	28	66	-59	NO ACTION
3	BUILDING	37	95	-56	NO ACTION
4	BUILDING	51	96	-47	NO ACTION
5	BUILDING	37	119	-62	NO ACTION
6	BUILDING	47	137	-90	NO ACTION
7	BUILDING	40	169	-129	NO ACTION
8	BUILDING	40	170	-129	NO ACTION
9	BUILDING	43	199	-156	NO ACTION
10	BUILDING	48	199	-151	NO ACTION
11	BUILDING	39	216	-177	NO ACTION
12	BUILDING	54	430	-376	NO ACTION
13	BUILDING	48	426	-378	NO ACTION
14	BUILDING	50	460	-410	NO ACTION
15	BUILDING	35	507	-472	NO ACTION
16	BUILDING	47	508	-461	NO ACTION
17	BUILDING	35	517	-482	NO ACTION
18	BUILDING	37	515	-479	NO ACTION
19	BUILDING	37	518	-481	NO ACTION
20	BUILDING	34	520	-486	NO ACTION
21	TREE	76	65	11	TRIM/REMOVE
22	TREE	52	74	-22	MONITOR GROWTH
23	TREE	77	81	-4	MONITOR GROWTH
24	TREE	47	92	-46	MONITOR GROWTH
25	TREE	63	94	-31	MONITOR GROWTH
26	TREE	80	96	-17	MONITOR GROWTH
27	TREE	74	107	-33	MONITOR GROWTH
28	TREE	56	112	-56	MONITOR GROWTH
29	TREE	69	119	-50	MONITOR GROWTH
30	TREE	51	120	-69	MONITOR GROWTH
31	TREE	84	132	-48	MONITOR GROWTH
32	TREE	80	129	-49	MONITOR GROWTH
33	TREE	61	163	-102	NO ACTION
34	TREE	69	162	-93	MONITOR GROWTH
35	TREE	59	168	-109	NO ACTION
36	TREE	49	183	-134	NO ACTION
37	TREE	63	439	-376	NO ACTION
38	TREE	62	445	-383	NO ACTION
39	TREE	66	453	-387	NO ACTION
40	TREE	59	489	-430	NO ACTION
41	TREE	72	511	-439	NO ACTION
42	FENCE	31	44	-13	NO ACTION

VERTIPOINT (SOUTH) OBSTRUCTION DATA TABLE					
OBJECT DATA			FUTURE E-1 APPROACH/DEPARTURE SURFACE		PROPOSED DISPOSITION
OBJECT NUMBER	OBJECT DESCRIPTION	OBJECT ELEVATION (MSL)	SURFACE ELEVATION (MSL)	SURFACE CLEARANCE (-) OR PENETRATION (+)	
43	FENCE	31	57	-26	NO ACTION
44	TREE	35	66	-31	MONITOR GROWTH
45	TREE	55	72	-17	MONITOR GROWTH
46	TREE	47	77	-30	MONITOR GROWTH
47	POLE	61	83	-22	NO ACTION
48	TREE	46	82	-36	MONITOR GROWTH
49	TREE	46	86	-40	MONITOR GROWTH
50	POLE	52	90	-38	NO ACTION
51	TREE	60	101	-41	MONITOR GROWTH
52	POLE	62	100	-38	NO ACTION
53	TREE	68	104	-35	MONITOR GROWTH
54	TREE	46	118	-72	MONITOR GROWTH
55	POLE	64	124	-60	NO ACTION
56	TREE	57	131	-74	MONITOR GROWTH
57	TREE	47	133	-85	MONITOR GROWTH
58	TREE	57	132	-75	MONITOR GROWTH
59	POLE	53	141	-89	NO ACTION
60	POLE	63	149	-86	NO ACTION
61	TREE	49	147	-96	MONITOR GROWTH
62	TREE	39	150	-111	NO ACTION
63	POLE	52	159	-107	NO ACTION
64	TREE	67	190	-123	NO ACTION
65	TREE	51	182	-131	NO ACTION
66	TREE	54	190	-136	NO ACTION
67	TREE	59	195	-136	NO ACTION
68	TREE	65	199	-134	NO ACTION
69	TREE	57	191	-133	NO ACTION
70	TREE	56	196	-142	NO ACTION

- NOTES:**
- OBJECTS THAT ARE IN BOLD TEXT ARE LOCATED ON-AIRPORT PROPERTY. ALL OTHER OBJECTS ARE LOCATED OFF-AIRPORT PROPERTY.
  - SELECTED OBJECTS FOR THE OBSTRUCTION ANALYSIS ARE OBJECTS THAT ARE LOCATED WITHIN THE APPROACH/DEPARTURE SURFACE BOUNDARY. THEN, OBJECTS ARE FURTHER ANALYZED AS CLEARANCE OR PENETRATION ACCORDING TO THE SURFACE.
  - REFER TO THE FUTURE VERTIPOINT PLAN AND PROFILES ON SHEETS VP4 AND VP4 FOR APPROACH/DEPARTURE SURFACE OBSTRUCTIONS.
  - OBSTRUCTION SURVEY COMPLETED IN MAY 2023 AND COMPLIES TO FAA AC 150/5300-18B.
  - CLEARANCE OR PENETRATION MAY NOT MATCH OBJECT ELEVATION MINUS SURFACE ELEVATION DUE TO ROUNDING.
  - OBJECTS WITH A NEGATIVE NUMBER (-) ARE BELOW OR CLEAR OF THE APPROACH/DEPARTURE SURFACE AND OBJECTS WITH A POSITIVE NUMBER (+) ARE ABOVE OR PENETRATE OF THE APPROACH/DEPARTURE SURFACE.
  - OBJECTS THAT ARE BELOW THE APPROACH/DEPARTURE SURFACE BY 100 FEET OR GREATER HAVE PROPOSED DISPOSITION OF "NO ACTION".
  - EXISTING AND FUTURE ROAD ELEVATIONS ARE TRAVERSE WAY ELEVATION PLUS TRAVERSE WAY ADJUSTMENTS (23' FOR RAILWAYS, 17' FOR INTERSTATE HIGHWAYS, 15' FOR OTHER PUBLIC ROADS, OR 10' FOR PRIVATE ROADS).

VERO BEACH  
REGIONAL AIRPORT  
(VRB)

AIRPORT LAYOUT PLAN  
DRAWINGS SET

DATE	REVISION DESCRIPTION	BY

ISSUE: AUGUST 2024  
PROJECT NO: 20A0069W01  
CAD FILE: 43\_VERTIPOINT\_OBS DATA TABLES.DWG  
DESIGN BY: JA  
DRAWN BY: JA  
REVIEWED BY: SZ

SHEET TITLE

VERTIPOINT  
OBSTRUCTION DATA  
TABLES